



EUROPEAN ENGINEERED

# TurboSpitze™ Cladding Screw

Introducing our European Engineered Cladding Screw – the perfect solution for your weatherboard projects.

Crafted with precision and backed by **leading European engineering**, the TurboSpitze™ Cladding Screw ensures **easier installation and better performance for face fixed weatherboard than commonly used rose head nails.**

### Key Features:

- **European Engineered:** Designed with cutting-edge technology for optimal performance.
- **Premium Quality:** Made from high-quality materials to withstand the test of time and harsh weather conditions.
- **Endorsed by Industry Leaders:** Trusted by top cedar and **thermally modified weatherboard suppliers** for superior reliability.

### Key Benefits:

- **Better Performance:** Our cladding screw provides more than 3x the holding capacity of the equivalent nail, meaning less movement in weatherboards (ie warping, cupping, etc)
- **Easier Installation:** The use of screws allows more control in the installation of the cladding and reduces the risk of damaging the boards. In addition, boards can be removed easily for maintenance/access.

**TurboSpitze™**  
**Cladding Screw**  
Leading European engineering.

**DRIVE**

T20 TX Drive

**HEAD TYPE**

Countersunk

**SplitShield THREAD**

Prevent splitting the fibres of the timber during movement

**POINT**

Self-Drilling Point

**FINISH**

316 Stainless Steel  
316 Stainless Steel Bronze  
316 Stainless Steel Black

**INCLUDES**  
In every pack

1x Depth Jig    1x T20 Allen Key    1x T20 TX Driver Bit



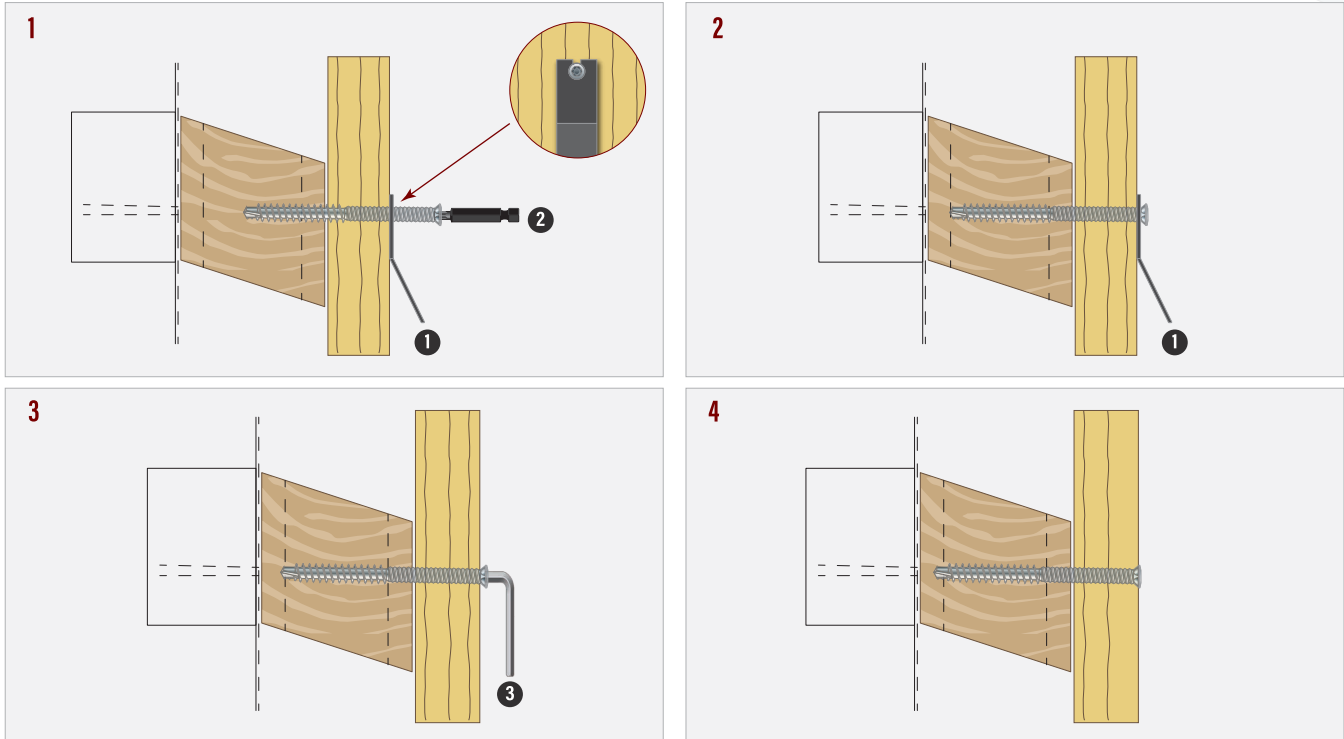


PEAN ENGINEERED

CLADDING SCREW			
Product Code	Size (mm)	Finish	Pack QTY
CLA316M560-250	5.5 x 60	316 S/Steel	250
CLA316M580-250	5.5 x 80	316 S/Steel	250
CLA316BZM560-250	5.5 x 60	316 S/Steel Bronze	250
CLA316BZM580-250	5.5 x 80	316 S/Steel Bronze	250
CLA316BKM560-250	5.5 x 60	316 S/Steel Black	250
CLA316BKM580-250	5.5 x 80	316 S/Steel Black	250
CLA316M590-250 (Structural batten screw)	5.5 x 90	316 S/Steel	250

All 60 & 80mm packs include Depth Jig, T20 Allen Key & T20 Driver Bit to ensure proper installation.  
 NOTE Please refer to the technical specification or weatherboard suppliers specification for installation.

Depth Jig Use



1 Jig 2 Driver bit 3 Allen key

NOTE: Please follow cladding suppliers installation recommendations. All screws are required to be predrilled (3.5mm)

ENDORSED/SPECIFIED BY: HUME PINE, ITI Timspec, JSC, Southern Pine Products, Rosenfeld Kidson

